



# CNY SAFETY

## Central New York Chapter

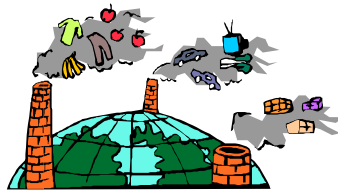
### Saving Three Birds with One Stone

As environmental health and safety professionals we spend a great deal of time working to prevent emergencies. We also spend a lot of time complying with government regulations. We spend less time preparing for emergencies and yet, we must be prepared.

Wouldn't it be nice if we could do all three in a efficient manner? Tier2 Submit may be the answer that would help you, your emergency responders, and your company.

Imagine your worst nightmare. There is a

release of a hazardous chemical at our facility and an outside response team has been called in. Wouldn't it be nice if they had information



about the chemical that was spilled, the location, and the facility? For those of your required to complete a Tier II report you have the ability to make it easy for them to do so.

The Tier II reports have a wide variety of infor-

mation that is useful to the agencies that respond to your site in case of an emergency. In fact they are to receive copies of the report. However, most agencies are swamped with paper and the chance that the data is available during a response is remote. There is a solution that should make it easier to submit the report and easier for agencies to use the data.

The EPA has an electronic version of the Tier II report called Tier2 Submit. This software is free and de-

*(Continued on page 2)*

#### Inside this issue:

EPA Report Submitting	1
CNY ASSE Scholarship	1
Post OSHA Summaries	3
New Designation Accepted for Professional Member	3
CNY ASSE Chapter Meeting Info	4
OSHA Training Opportunity	4

### CNY ASSE Student Scholarship

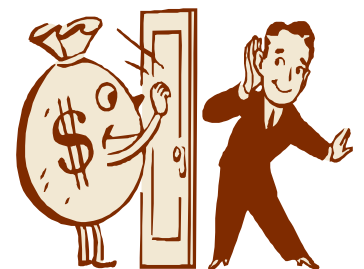
The CNY Chapter of the American Society of Safety Engineers, in keeping with its mission to promote the advancement of the safety profession and safety professionals in its geographic area, has estab-

lished a scholarship program to financially assist deserving individuals pursuing a degree in Occupational Safety or other related curriculum at a college or university. The scholarship awards range from

\$500 to \$1000 per recipient, and is awarded annually.

College students and high school students are both eligible, but must be enrolled in a safety

*(Continued on page 2)*



---

## Saving Three Birds with One Stone

*(Continued from page 1)*

signed to collect the required and optional data electronically. One Environmental engineer indicates that it is easier than the paper version. Also, while the version will be changed and updated each year, you can import data to the new software, avoiding the effort of redoing the report each year.



CAMEO. With your facility listed, they will be able to identify contacts, look for chemicals in the inventory and identify locations where the chemical is located. If a graphic of the facility is included they will have a plot allowing them to plan their entrance to the facility and begin to layout their response units.

Once the chemical has been selected, they will be able to pull up a great deal of technical data on the chemical. They can also begin to model the concentrations down wind of the release and plot the release on a map of the county. Such data will allow them to make decisions regarding sheltering or evacuating affected individuals.

You can find more information about Tier2 Submit at the following link:  
<http://yosemite.epa.gov/oswer/>

The data can then be e-mailed to local officials. In Onondaga County, you can e-mail it to Pete Alberti, Commissioner of Emergency Management at [PeterAlberti@ongov.net](mailto:PeterAlberti@ongov.net). The data can then be imported into a software package called CAMEO. This software is loaded on the computers County Special Operations Team and the City HazMat Team.

Select members of these teams have been trained in the use of

[ceppoweb.nsf/content/tier2.htm?openDocument](http://ceppoweb.nsf/content/tier2.htm?openDocument)

Please consider providing this useful data, while complying with governmental regulations, while saving effort. We in the environmental field do save birds not kill birds. How about saving three birds with one stone/tool. Besides, you will make my life easier. I am one of the responders modeling the release as the team helps you avoid disaster. Please feel free to call me at 432-2137 if you have any questions.

Contributed by:  
Paul W. Tranchell RBP, CSP, CIH  
Manager of Safety and Industrial Hygiene, Bristol-Myers Squibb  
Syracuse, New York

---

## Scholarship Applications... .

*(Continued from page 1)*

and health related program for the coming year. Preference shall be given to students who reside within the geographical boundaries of the Central New York Chapter and maintain at least a 3.0 grade point average.

Applications can be downloaded

off the CNY ASSE web site, <http://cny.asse.org>, and must be submitted by March 31st. All applications must be made on the form provided along with a copy of all transcripts, current course registration, one (1) personal letter of reference, one (1) academic letter of reference, letter to the committee outlining scholas-

tic and career goals, and any other pertinent information.

Recipients will be notified by June 1st. Questions regarding this application can be addressed to [knnyager@dreamscape.com](mailto:knnyager@dreamscape.com) or [mglea21789@aol.com](mailto:mglea21789@aol.com).

---

## OSHA Issues Reminder to Post Injury Summaries

**WASHINGTON --** Beginning February 1, employers must post a summary of the total number of job-related injuries and illnesses that occurred last year, according to the Occupational Safety and Health Administration (OSHA). Employers are required to post only the Summary (OSHA Form 300A)-not the OSHA 300 Log -from Feb.1 to Apr. 30, 2004.

The summary must list the total numbers of job-related injuries and illnesses that occurred in 2003 and were logged on the OSHA 300 form. Employment information about annual average number of employees and total hours worked during the calendar year is also required to assist in calculating incidence rates. Companies with no recordable injuries or illnesses in 2003 must post the form with zeros on the total line. All establishment summaries must be certified by a company executive.

The form is to be displayed in a common area wherever notices to employees are usually posted. Employers must make a copy of the summary available to employees who move from worksite to worksite, such as construction workers, and employees who do not report to any fixed establishment on a regular basis.

Exempted employers may still be selected by the Labor Department's Bureau of Labor Statistics to participate in an annual statistical survey. All employers covered by OSHA need to comply with safety and health standards and must report verbally within eight hours to the nearest OSHA office all accidents that result in one or more fatalities or in the hospitalization of three or more employees.

Copies of the OSHA Forms 300, 300A and 301 are available on the OSHA Recordkeeping Webpage in either Adobe PDF or Microsoft Excel Spreadsheet format. For more information, visit [www.osha.gov](http://www.osha.gov).

---

## CHMM Accepted as ASSE Professional Member Status

The highest level of American Society of Safety Engineers' (ASSE) membership, the Professional Member, is now open to those with a Certified Hazardous Materials Manager (CHMM) certification. In approving the change, ASSE officials noted that all new member applicants with a CHMM designation will now be eligible for automatic classification.

Of ASSE's 30,000 members, more than 500 have the accredited CHMM certification and nearly 250 are not Professional Members. Those ASSE members with a CHMM may now apply for reclassification to Professional Member. CHMM joins the designations of Certified Safety Professional (CSP), Certified Industrial Hygienist (CIH), Certified Health Physicist (CHP), Canadian Registered Safety Professional (CRSP), U.K.-Institute

of Occupational Safety and Health - Registered Safety Professional (IOSH-RSP) and Professional Engineer (P.E.) as the accredited certifications/registrations accepted for Professional Member status in ASSE.

This inclusion is another action taken by ASSE and the Academy of Certified Hazardous Materials Managers (ACHMM) to enhance their mutual efforts in the area of occupational safety, health and the environment. In September 2002 an agreement was signed between ASSE and the ACHMM that states: a) they will seek opportunities for cooperative effort in the areas of government affairs, professional and technical standards development and professional practice; b) encourage a cooperative effort at all levels of their organizations in activities such as professional develop-

ment and community service; c) use their communications capabilities to promote cooperation, reciprocal activities and mutually beneficial initiatives; d) develop cooperative initiatives of mutual or reciprocal benefit, such as member discounts, product exchanges and publication sales; and, e) establish a respective Board of Director liaison to facilitate communication between the organizations.

ACHMM is a membership organization primarily for people with a CHMM designation. Established in 1985, ACHMM has 10,000 members. While the Institute of Hazardous Materials Management (IHMM) certifies and recertifies CHMMs, certification that began in 1984, the Academy and its affiliated chapters serve as the national membership organization.

American Society of Safety  
Engineers

Central New York Chapter  
PO Box 42  
Dewitt, NY 13214



Mailing Address Line 1  
Mailing Address Line 2  
Mailing Address Line 3  
Mailing Address Line 4  
Mailing Address Line 5

Protecting people, property,  
and the environment since 1911

---

## February Chapter Meeting Agenda

Members and friends are welcome to join the Central New York ASSE Chapter, the Upstate NY Occupational Health Nurses Association, and the local AIHA Chapter, when we gather for our February dinner meeting. We welcome Mr. Michael Halter, from Marsh Risk Management, who will give his presentation on "A Practical Guide to Effective Ergonomics". \$15 covers dinner (beef, fish, or chicken), taxes, and tip. Hope to see many of you there!

What: "A Practical Guide to Effective Ergonomics", presented by Mr. Michael Halter

Where: Foster's Restaurant (upstairs), 105 First Street, Liverpool

When: Thursday, February 19th, 5:30pm.

RSVP: by Monday, February 16th, to [nph4@cornell.edu](mailto:nph4@cornell.edu) or 607.254.5439

---

## OSHA Training on Health Hazards to Take Place in Rochester, 2/5-2/19

Helping small Upstate New York employers identify and eliminate or control occupational health hazards and gain a basic understanding of the OSHA health standards are the goals of seminars being offered by the Buffalo office of the U.S. Department of Labor's OSHA. "Some occupational hazards are readily evident while others are much more difficult to identify. This seminar will focus on what are typically the hidden dangers of the workplace, health hazards," said Art Dube, OSHA's Buffalo area director. This session will conclude the Small Business Seminar Series that OSHA has been offering over the past year to help small Upstate New York employers assemble a safety and health toolbox of information for use in complying with workplace safety and health standards. **To register for one of the February seminars, or to obtain more information, contact Gordon DeLeys at the Buffalo OSHA Area Office at 716-684-3891 extension 244.**